

正样  
2023.11.16  
B01

Copyright: Copyright infringement reserved.

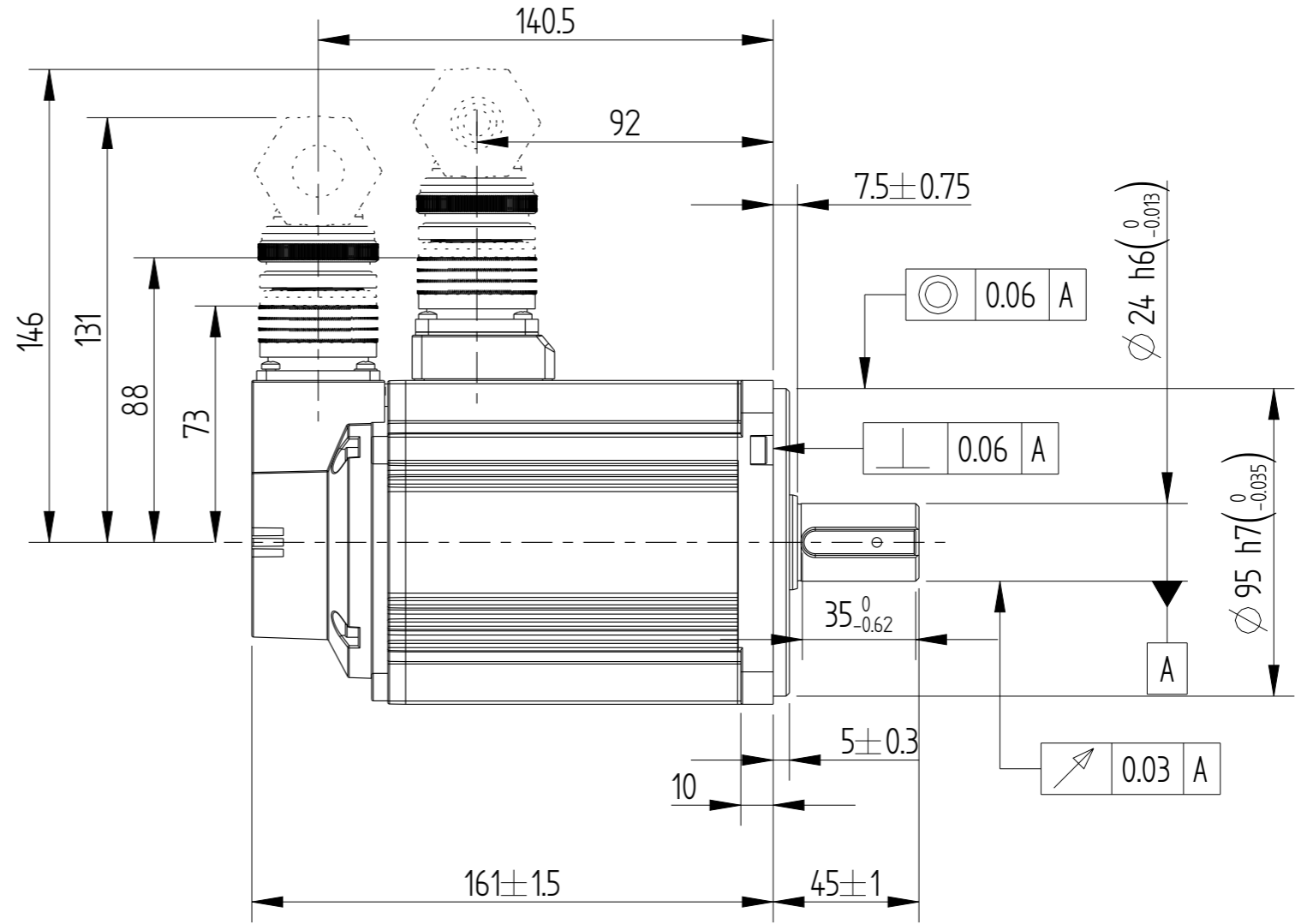
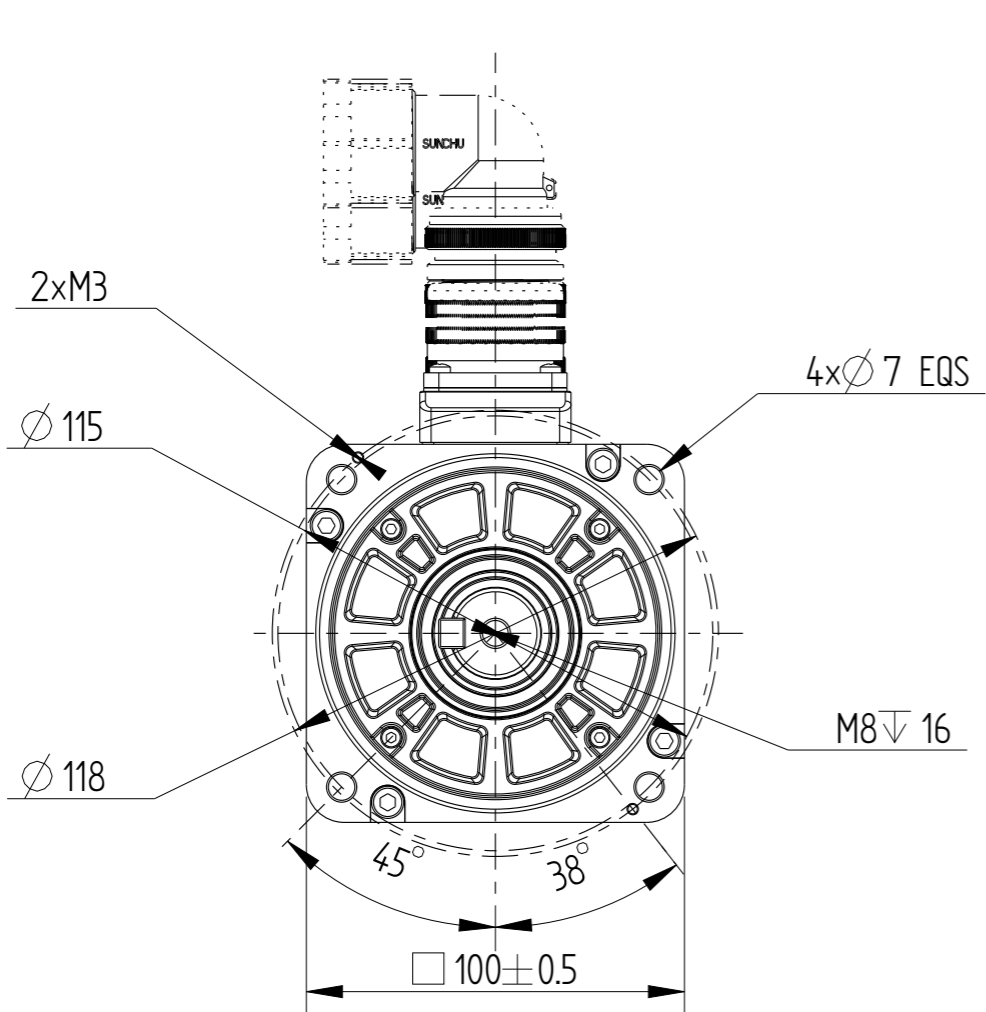
INOVANCE

F  
A3

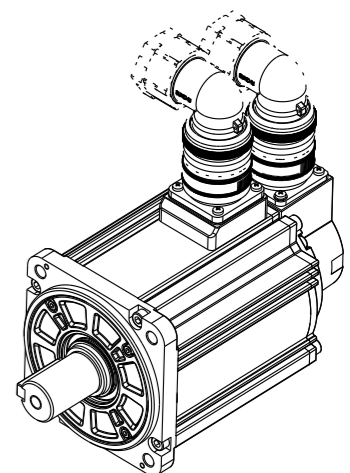
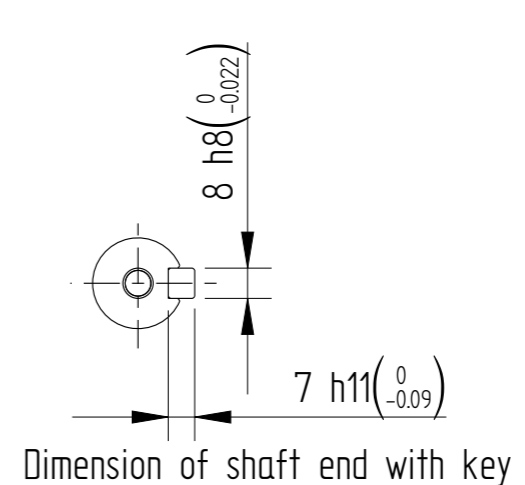
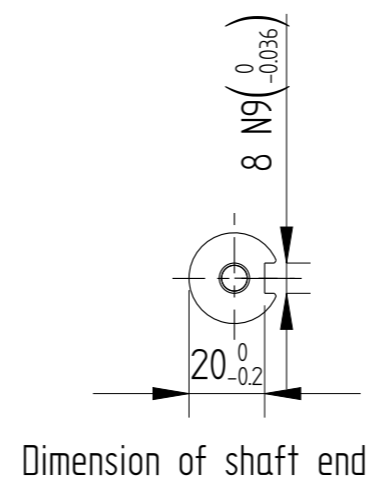
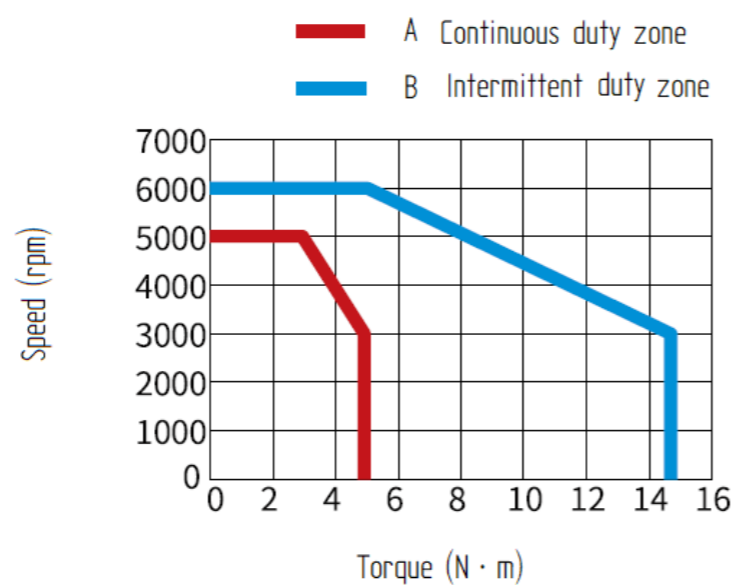
外部公开

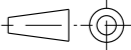
Amendment	Description

Unit: Millimeter (mm)



Basic function parameters	
Rated power KW	1.5
Rated voltage V	220
Rated current A	8.6
Peak current at rated speed A	32
Rated torque Nm	4.9
Peak torque at rated speed Nm	14.7
Rated speed rpm	3000
Max speed rpm	6000
Rotor inertia kg·cm <sup>2</sup>	2.35±10%
Encoder resolution	26bit
Insulation class	F(155° C)
Protection level	IP67
Static torque of brake Nm	/
Brake power supply	/
Duty cycle	S1
Radial line load N	686
Axial load N	196



				Motor Outline Drawing			01118117-WX	
B01	New Archive	/	20230916					
Version	Change method	Changed by	Date	/			Mark	INOVANCE
Design	/							
Check	/							
Craft	/							
Verify	/			Weight	Scale	Version	Page 1 of 1	
Standardization	/			4.65kg	1:2	B01	Model	MS1H2-15C30CB-S631R-INT
Approve	/							